

INSTALLATION GUIDE | Payload Bracket for Sigyn Mkl

version 1.0.0 | October 2023

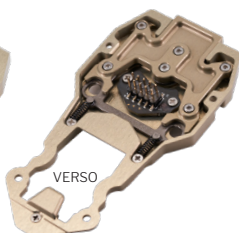
In order to accommodate the various payloads - Sound & Light Diversion and Vertical Camera - developed for its tactical robotic suite, Sky-Hero has engineered a dedicated payload connection bracket for the Sigyn Mkl sUGV that can easily and quickly support any payload from its range with a single click.

REQUIRED ITEMS

Components



1 1x Main Connecting Plate



2 2x Screw 2.5



3 2x Screw 3.0



1x Sigyn Mkl Tactical sUGV

Tool



INSTALLATION STEPS



Ensure that the selected Sigyn Mkl unit is switched off, before following the payload connection bracket fitting instructions below, otherwise internal components of the drone may be damaged

Take the appropriate payload connection bracket and fit to body of the unit intended to use the payload(s). Please refer to the explanations below and to the diagrams overleaf for details of the various steps that need to be followed:

STEP 1 On the upper part of the robot, remove the plastic cover marked «Payload» that protects the payload connector area

STEP 2 Position the payload connection bracket **1** by aligning the screw holes

STEP 3 Be sure the connector and pins are well aligned too

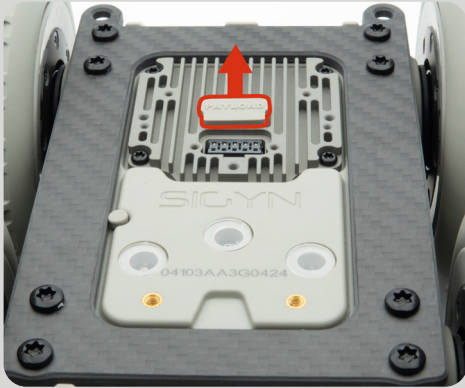
Then gently press the main connecting plate **1** against the surface of the drone.

STEP 4 Insert the two screws **2** (Hex H2) for the front section and two screws **3** (Hex H2) for the rear section supplied in their dedicated holes, and tighten them

STEP 5 The payload connection bracket for Sigyn Mkl sUGV is now installed and ready to receive any of the Sky-Hero payloads developed

INSTALLATION STEPS

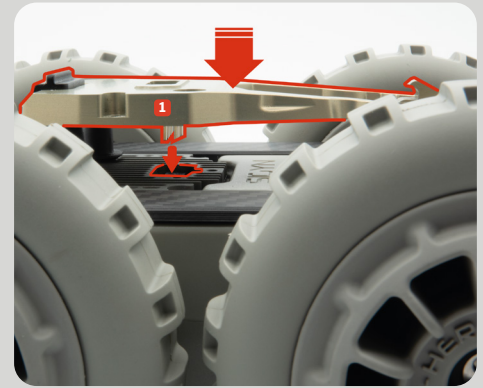
STEP 1



STEP 2



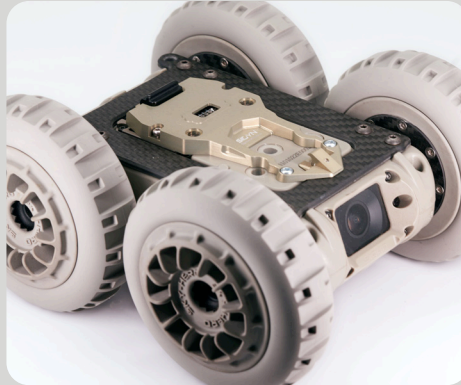
STEP 3



STEP 4



STEP 5



Are you missing any parts / accessories or do you need assistance with this unit?

Contact your local distributor
sky-hero.com/distributors